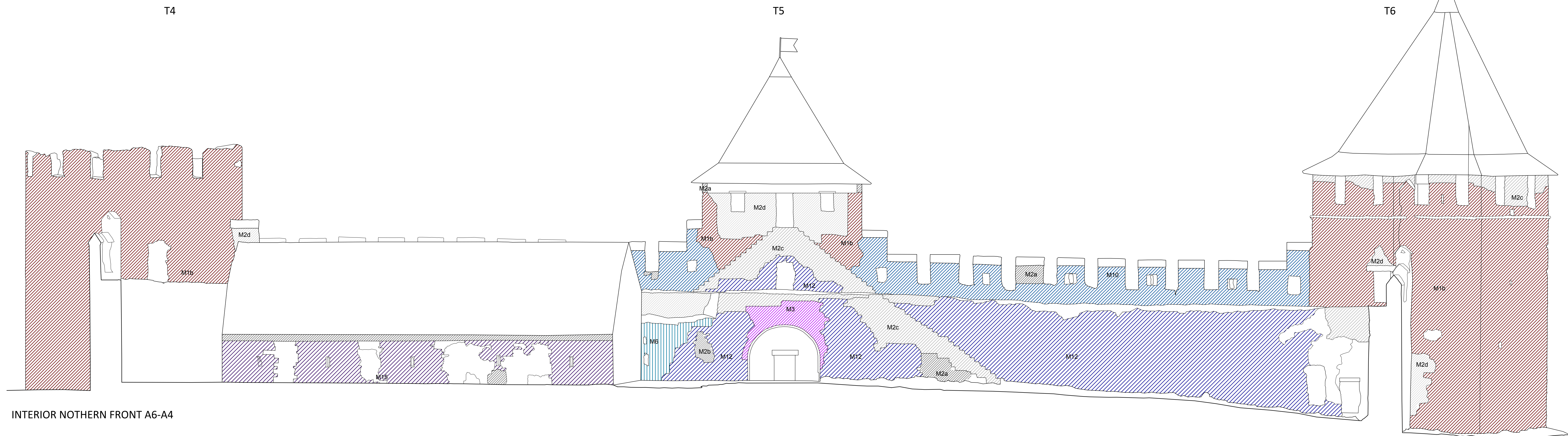
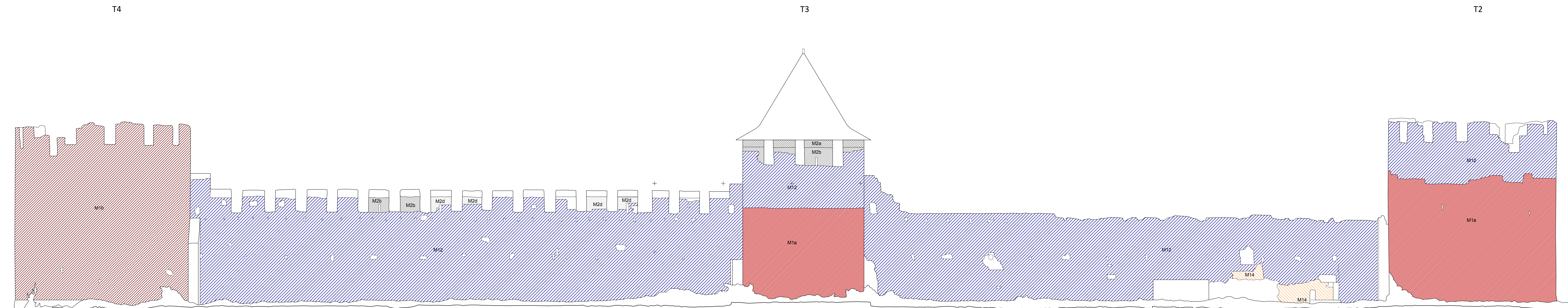


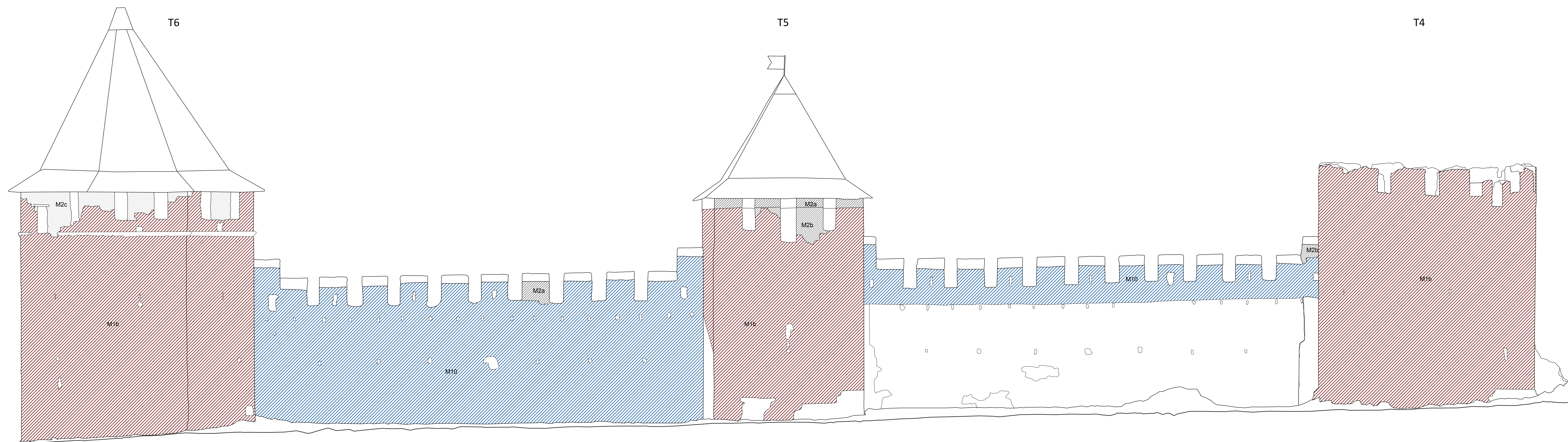
INTERIOR WESTERN FRONT A4-A2



INTERIOR NOTHERN FRONT A6-A4



EXTERIOR WESTERN FRONT A4-A2

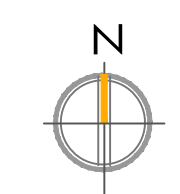
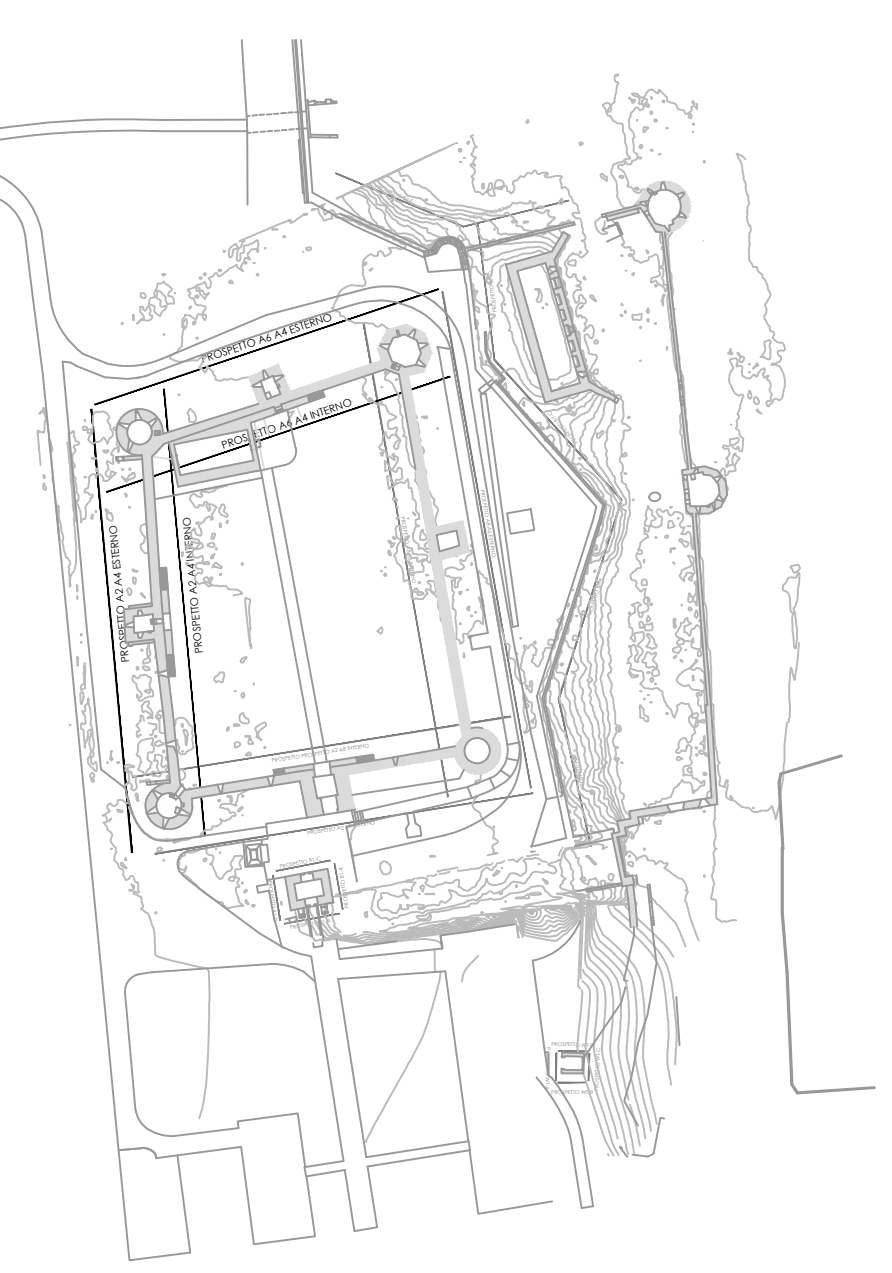
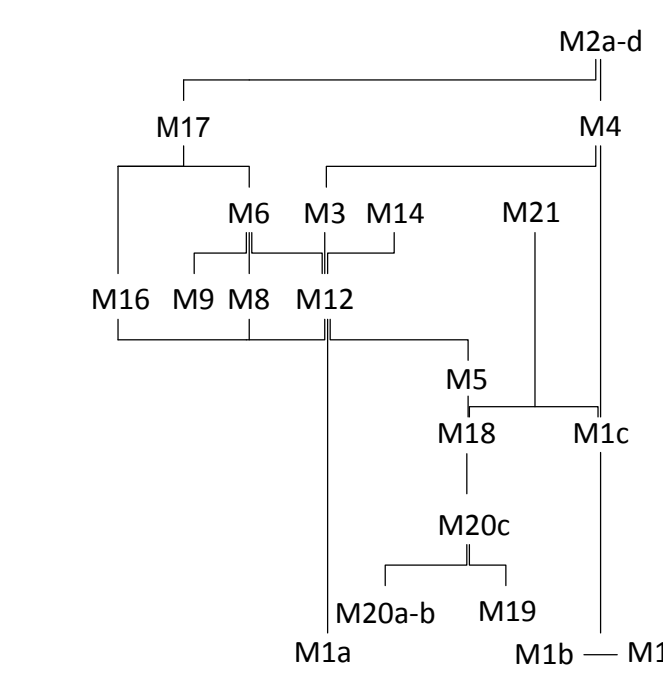


EXTERIOR NOTHERN FRONT A6-A4

SYMBOLS OF DISTRIBUTION

| | | | | |
|-----|-----|-----|------|------|
| M1a | M2d | M9 | M16 | M20c |
| M1b | M3 | M10 | M17 | M21 |
| M1c | M4 | M11 | M18 | M22 |
| M2a | M5 | M12 | M19 | |
| M2b | M6 | M13 | M20a | |
| M2c | M8 | M15 | M20b | |

HARRIS MATRIX



This project is funded by the European Union

CLIENT: European Union Delegation to Moldova through its operational contractor UNDP

Technical Expertise and develop Detailed Technical Design for CONSERVATION AND RESTORATION WORKS OF BENDER FORTRESS (Phase I)

DETAILED TECHNICAL DESIGN

TEAM LEADER

Studio Berlucchi srl
Arch. Eng. Nicola Berlucchi - Eng. Nicola Fumagalli
Arch. Francesco Berti - Eng. Alessandro Tassi
www.studioberlucchi.it

INTERNATIONAL EXPERTS

Prof. Donatella Fiorani
Conservation expert
www.geogra.it

Prof. Carlo Biasi
Structural restoration expert
www.geogra.it

Arch. Sergio Garconia
Certified local Architect
since 2017 number 386

Eng. Stanislav Condritenco
Certified local Engineer
since 2017 number 586

LOCAL EXPERTS

Arch. Corina Ficcanza
Assistant local Architect

Eng. Evgheni Cutia
Assistant local Engineer

Dr. Sergiu Mustata
Archaeologist

Dr. Igor Nicora
Geologist

Arch. Carlotta Cocco
GRC HR Expert

| | | | |
|---|---------|----------------|---------------------|
| C | | | |
| B | | | |
| A | | | |
| - | 01-2025 | first revision | C226_RM_002_000.dwg |
| - | 02-2025 | revision | FILE NAME |

TITLE: MASONRY ANALYSIS
Distribution: western and northern fronts

ASSIGN: C226 - R EM 002

REPRESENTATION SCALE: 1:100

EXPERT STAMP AND SIGNATURE:

The project is funded by the European Union through its operational contractor UNDP

EUROPEAN UNION